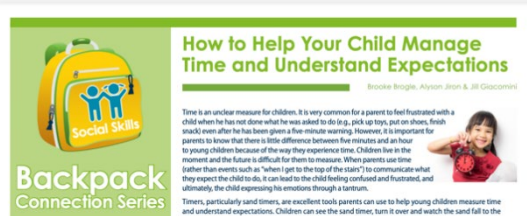




Pyramid Pages

News & Tools for Parents & Early Childhood Providers

Social-emotional learning and development is fundamental to children's success in school and beyond, and its importance is understood now more than ever. The Pyramid Model promotes young children's healthy social and emotional development; and provides tools, strategies, and resources for caregivers and families.



Click to Read:

[How to Help Your Child Manage Time and Understand Expectations](#)

News

Time is an unclear measure for children. Adults can feel frustrated with children when they have not done what they were asked to do (e.g. pick up toys, finish snack) even after being given a five-minute warning.

Visual timers, such as sand timers, are excellent tools parents and teachers can use to help young children measure time and understand expectations. Check out this Backpack resource for lots of ideas.

Tools

This sample scripted story shows a child learning the steps to cleaning up toys.

Check out how to write your own scripted story for clean up time:

https://challengingbehavior.org/docs/ScriptedStory_CleanUp_Tips.pdf



Click to Read:

[Clean Up Story Example](#)

Resources

- **Check Out:** https://www.eccpct.com/Custom-Content/www/CMS/files/Tips_for_Tots_1/1-2_ECCP_Tips_for_Tots_Classroom_Environment_Transitions.pdf
- Here are more **ideas:** https://challengingbehavior.org/docs/booknook/BookNook_bombaloo.pdf
- And a **read-aloud** for children: <https://youtu.be/dOChp27E58s>
- **For more information**, email us at CTPyramid@gmail.com.

